



# CleverView® for TCP/IP v9.2

## The Leading IBM Z Enterprise Service Management Availability and Performance Solution

### CLEVER® Business Cloud Service Management

#### Key Features

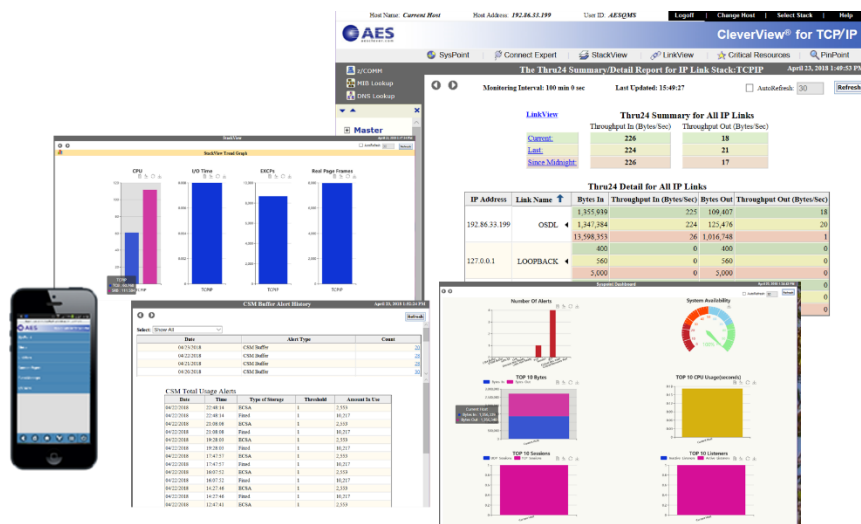
- **Mobile and browser interfaces** ensure real-time notification of problems leading to increased z/OS service availability
- Strengthen z/OS **mainframe security for FTP** with online FTP session logon failure display/historical summary
- Measure, summarize and report on **TN3270 Interval** based response time monitoring, **CICS** performance, **DVIPA** workload balancing, and **OSA express** thput performance
- Monitor z/OS based TCP/IP application and critical resource Service Level performance in real-time with **SysPoint**
- View real-time session information (TCP and UDP endpoints) with **Connect Expert** and **PORTMon**
- Issue Start/Stop commands with **LinkView**, which shows the traffic and status of channel-attached processors
- View EE, APPN/HPR, and UDP metrics for monitoring, alerting, and historical trends with **EE Expert**
- Improve operator effectiveness with **Dashboard**, **Expert Commands** and **Event Manager Grouping** functions

Global corporations are implementing key technologies supporting transition to Cloud computing, Big Data Analytics, Bring Your Own Device (BYOD), and data center transformation to be more agile in their business services. The corresponding infrastructure upgrades to meet these business demands must also contend with major outside influences like regulatory compliance mandates, government and industry compliance imperatives, and internal audit directives. These programs and projects are all increasing the transaction rates and user demands on your z/OS systems.

**CleverView for TCP/IP** helps performance analysts, operations personnel, knowledge workers, system programmers, and capacity planners effectively monitor availability, performance and plan for the future. Its superior performance monitoring makes it the ultimate choice for large IBM® Z data centers undergoing wide scale Business Services transformation. By combining real-time monitoring and alerts to potential problems with in-depth historical reporting of activity and trends, **CleverView for TCP/IP** gives you a proactive, comprehensive, automated solution to z/OS TCP/IP workload performance and availability management.

#### CleverView for TCP/IP sample highlights:

- Customizable and comprehensive real-time, near-time, and historical views of your z/OS TCP/IP performance
- Industry unique interval and session performance data reporting
- z/OS system-wide message capture and automatic response with message grouping capability
- Intelligent alerting and enhanced filtering with browser and mobile support
- Comprehensive application monitoring with workload performance metrics such as session and transaction based RTT times
- Integration with tools like MXG and managers-of-managers systems



**AES**  
**P. O. Box 50927**  
**Palo Alto, CA 94303**  
**650-617-2400**  
[www.aesclever.com](http://www.aesclever.com)  
[info@aesclever.com](mailto:info@aesclever.com)



# Applied Expert Systems - The Business Cloud Service Management Company

## Highlights of CleverView® for TCP/IP

- **CLEVER® Mobile for z/COMM** optional feature provides mobile access to monitored features and access to system wide messages and alert notification.
- Issue commands for z/OS and TSO, with **z/COMM** support, plus automation support for REXX and CLIST.
- **Connect Expert** shows real-time application session activity for TCP and UDP (EE, non-EE).
- **LinkView** shows the traffic and status of channel-attached processors and allows easy execution of Start/Stop commands.
- **StackView** displays CPU, I/O, and other critical resource usage data for TCP/IP stacks with both real time and historical views.
- **Critical Resources** tracks performance and availability of any defined IP node regardless of location even if on a different IP network.
- **Real-Time Packet tracing** capability, including OSAENTA Trace generation.
- **PinPoint** details application, client, link, port, printer, protocol, and resource activity quickly with zoom capability.
- **Event Manager** captures z/OS system-wide system messages with filtering, alert, and action capabilities.
- **SessionLog** displays business application session traffic, **Round Trip Time** (RTT) details, and CICS transaction details.
- **Workload and Performance** reports available for FTP, Telnet, and API applications. Batch reports include availability and performance Service Level achievement percentage calculations, plus session **Round Trip Time** (RTT) reports.
- **SNMP MIB Browser support** includes BGP, CSS, OSPF, RMON, Bridge, Ethernet, and Printer MIBs.
- **Enhanced monitoring of OSA Express, CICS, Enterprise Extender, FTP, and TN3270** provides real-time and historical access to critical z/OS application metrics impacting business services.
- **Enterprise Extender Expert** includes EE Connections (connection status and traffic data), *APPN/HPR Connections* (Session information about HPR pipes), and *UDP Port* (real-time EE UDP workload data for EE assigned port).
- **RTTMon** provides details and alerts on the Round Trip Time (RTT) for any TCP/IP transaction.
- **PORTMon** produces alerts and details on TCP/IP applications and protocol.
- **FTP Server Intrusion Detection** strengthens z/OS security for File Transfer Program (FTP) with online FTP session logon failure in real-time and through historical reports.

## CleverView for TCP/IP Version v9.2 introduces:

An evolving interface with a new **Dashboard** and improved graphics. Clarity is the most important element of user interface design. The new **Dashboard** and graphics communicate more meaning and function in a concise and familiar manor. The ability to 'drill-down' is an effective way to provide details without presenting a cluttered screen. With alert details a user becomes more effective due to quick access to information regarding the alert.

### System Requirements

- **System z:** 700 3390-type device tracks (product libraries), 600 3390-type device cylinders (databases), z/OS V2R2 or later
- **Web Server:** For Windows/Linux - 4 GB of RAM, 1 GHz processor or higher, 1 GB of hard disk space
- **Operating Systems** - z/OS V2R3 or later, Windows Server 2019, Windows 10, Red Hat Enterprise Linux 8 or Higher, and SUSE Linux Enterprise Server 12 or higher
- **JAVA Platform:** WebSphere for z/OS 7.0 or later, Apache Tomcat 8.0 or later, JRE **must** be 8.0 or higher
- **Browser Applications:** Edge, Firefox, Chrome

### Optional feature CLEVER Mobile for z/COMM:

- **Android:** 4.x or above
- **iOS:** 5.x or above



AES  
P.O. Box 50927, Palo Alto, CA 94303 USA  
Phone: (650) 617-2400 Fax: (650) 617-2420  
Website: [www.aesclever.com](http://www.aesclever.com) Email: [info@aesclever.com](mailto:info@aesclever.com)



MM-2-1902-DS